

Paper Machine Headbox / Lean Stock Simulator



Your technical resource for improving Pulp and Paper process control performance

Use the Simulator to:

Train operators

- Improve process knowledge
- Develop troubleshooting skills

Train control personnel

- Understand control strategies
- Develop control loop tuning

Troubleshoot control problems

- Inject 'what if' disturbances
- Inject process non-linearities

Evaluate design options

- Flow/Fibre balancing
- Control strategy options
- Identify process bottlenecks

Applications

- Investigate variability propagation from the lean stock system to the reel
- Investigate sources of Headbox consistency variability
- Understand the impact of lean stock and headbox operating adjustments on BW and Moisture variability
- Compare Headbox control strategies
- Investigate Headbox/Tray consistency control
- Evaluate financial benefits of reduced Basis Weight variability

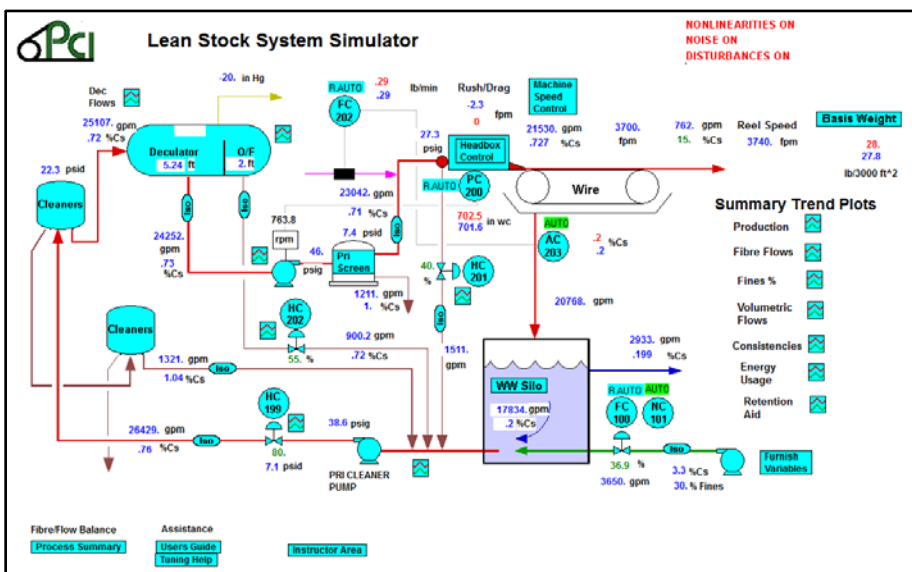
Simulator Pricing

From CDN per license \$3000.00
 USD per license \$2600.00

(Canadian Taxes Included.)
 Fees include a copy of VisSim Viewer, a Lean Stock simulator handbook, and a USB protection plug.

About ProNamics

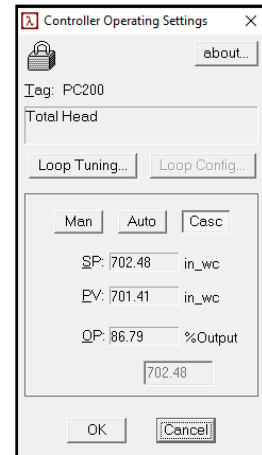
ProNamics Control Inc. is based in Vancouver, BC. The company conducts process and control optimization surveys, prepares process simulations to establish best practices and provides a range of training courses related to process control optimization. Visit our web sites at www.pronamicscontrol.com for more information about our services.



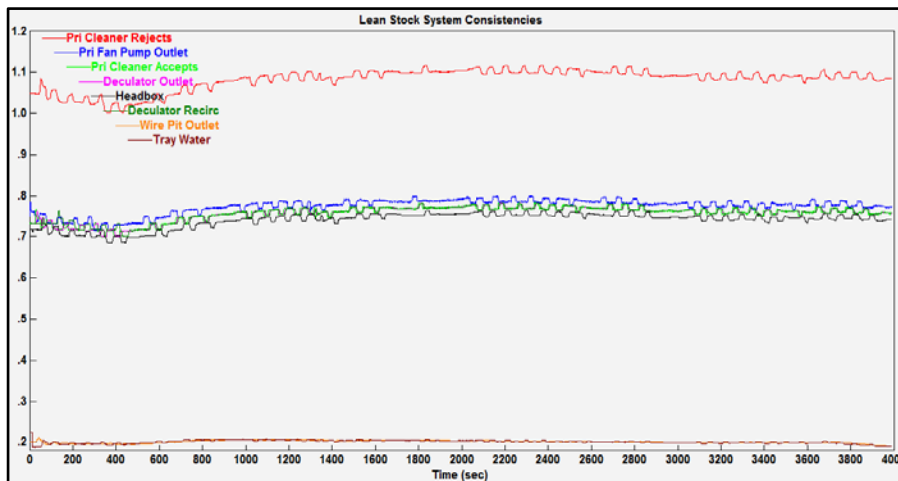
Headbox / Lean Stock System Simulator Features

- DCS-like graphical interface
- Extensive trending and data export capability
- Built-in help displays
- Configurable process equipment
 - Cleaners, Deculator, Headbox, Fan Pumps, Valves
- Selectable control strategies
 - Headbox Rush/Drag, J/W
 - Retention control Adjustable controller tuning, filtering, controller configuration
- Adjustable controller tuning, filtering, controller configuration
- Disturbance injection capabilities to build troubleshooting skills and conduct sensitivity analysis

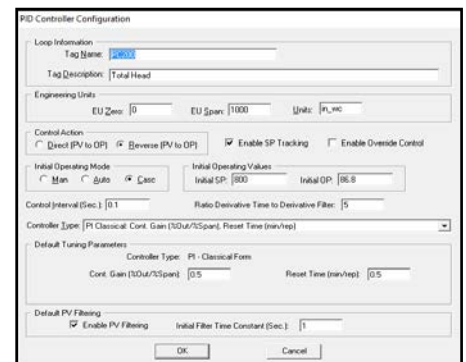
Controller Operator Station



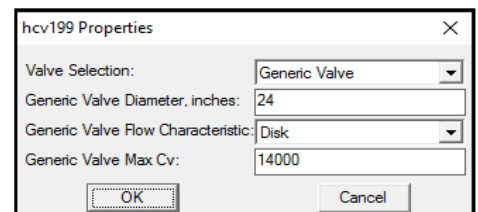
Trend Plots



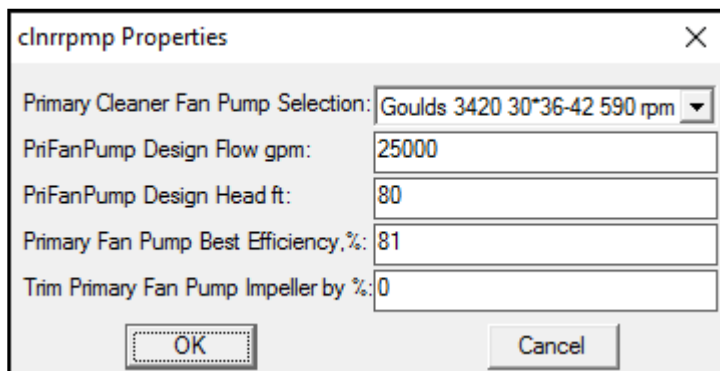
PID Controller



Valve Selection



Fan Pump Configuration



Deculator Configuration

